

OFFICE OF
RESEARCH
UNIVERSITY OF MICHIGAN

With almost \$1.4 billion in research expenditures annually, the University of Michigan is one of the world's leading research universities. The U-M Office of Research (UMOR) supports this enterprise by cultivating interdisciplinary research and providing a range of services across all three campuses. Our activities include:

- **Fostering new research** through our affiliated interdisciplinary academic units, new initiative development, novel seed funding programs, and our grants and awards program.
- **Providing central research administration** from proposal development and submission, through contract negotiation, to project closeout.
- **Building partnerships** with industry, government and academia.
- **Managing knowledge transfer** and economic development.
- **Supporting a culture of ethical research and compliance** by providing guidance and oversight in such areas as the protection of human and animal subjects, biological safety and conflict of interest management.
- **Overseeing research policy** regarding regulations and emerging issues, guidelines for research-track faculty, and other areas.
- **Advocating for university research** among such key constituencies as federal and state government, industry, and the media.

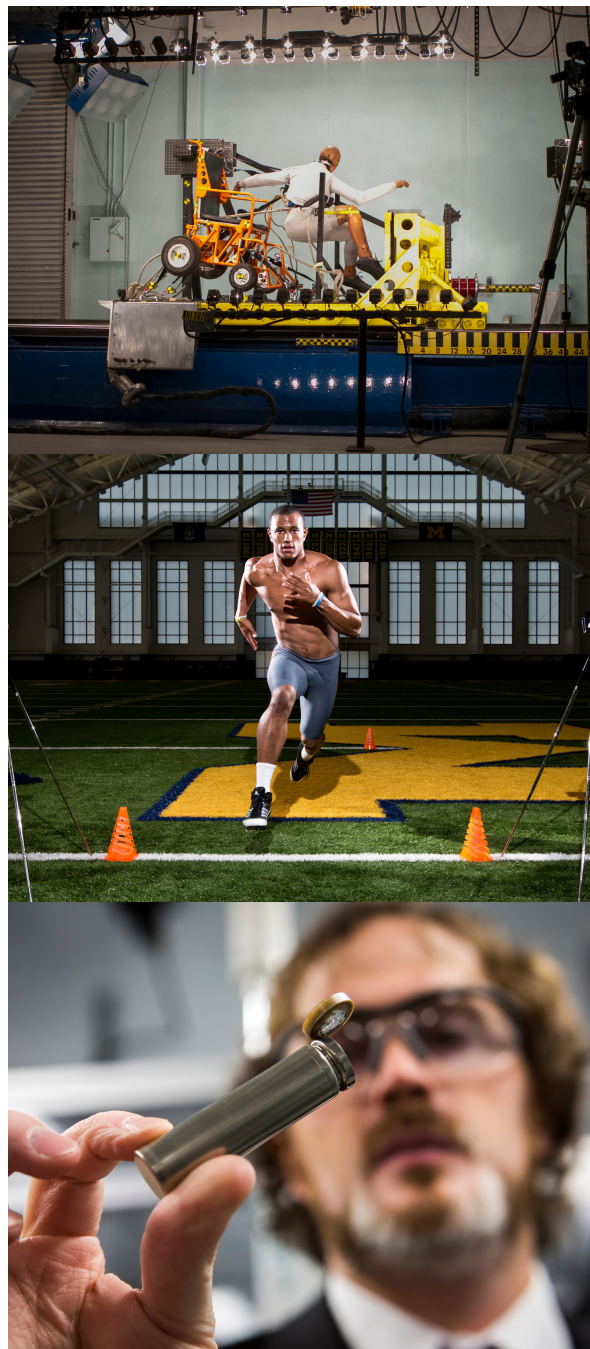
Under the direction of the Office of the Vice President for Research, UMOR's diverse units serve to coordinate, support, and strengthen U-M's research enterprise.

UMOR Service Units

- Advanced Research Computing (arc.umich.edu)
- Animal Care & Use Program (animalcare.umich.edu)
- Business Engagement Center (bec.umich.edu)
- Consulting for Statistics, Computing and Analytics Research (cscar.research.umich.edu)
- Functional Magnetic Resonance Imaging (fmri.research.umich.edu)
- Office of Federal Relations for Research (research.umich.edu/federal-relations-research)
- Mcubed (mcubed.umich.edu)
- Office of Research & Sponsored Projects (orsp.umich.edu)
- Office of Technology Transfer (techtransfer.umich.edu)
- Research Communications (research.umich.edu/news-issues)
- Research Ethics & Compliance (research-compliance.umich.edu)

UMOR Interdisciplinary Academic Units and Initiatives

- Center for Human Growth & Development (chgd.umich.edu)
- Economic Growth Institute (economicgrowth.umich.edu)
- Energy Institute (energy.umich.edu)
- Exercise & Sport Science Initiative (essi.umich.edu)
- Institute for Research on Women & Gender (irwg.umich.edu)
- Mcity (mcity.umich.edu)
- Michigan Institute for Data Science (midas.umich.edu)
- Michigan Institute for Computational Discovery and Engineering (micde.umich.edu)
- Transportation Research Institute (umtri.umich.edu)



Questions? Call 734-764-1185 or Email UMresearch@umich.edu

University of Michigan Office of Research | 503 Thompson St. | Ann Arbor, MI 48109