

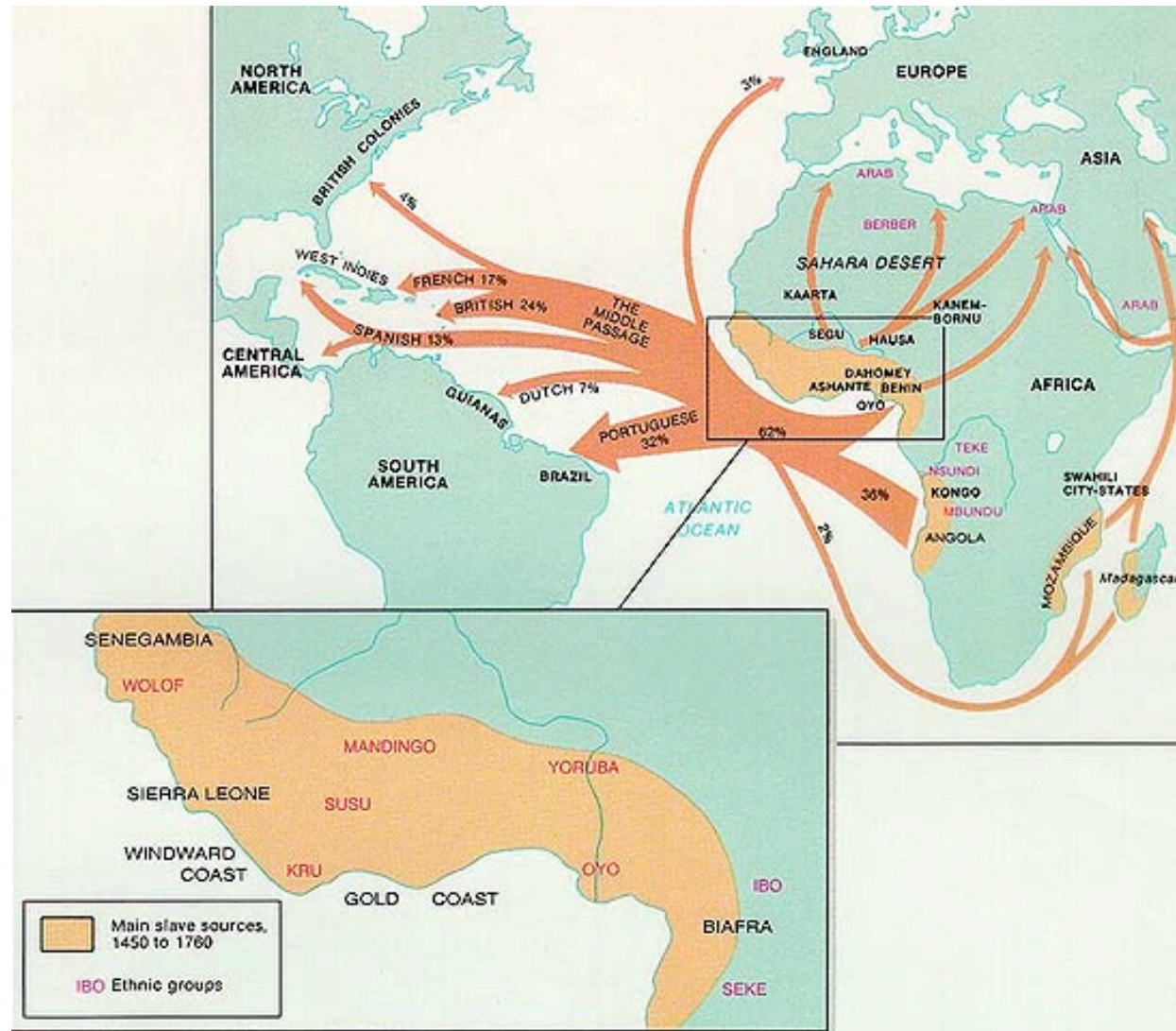
# The Transatlantic Slave Trade Map Project

Professor Warren Whatley  
Economics and CAAS

UM

TTI Conference  
University of Michigan  
August 13-14, 2008

# Make this dynamic and interactive!



# Resources and Technology

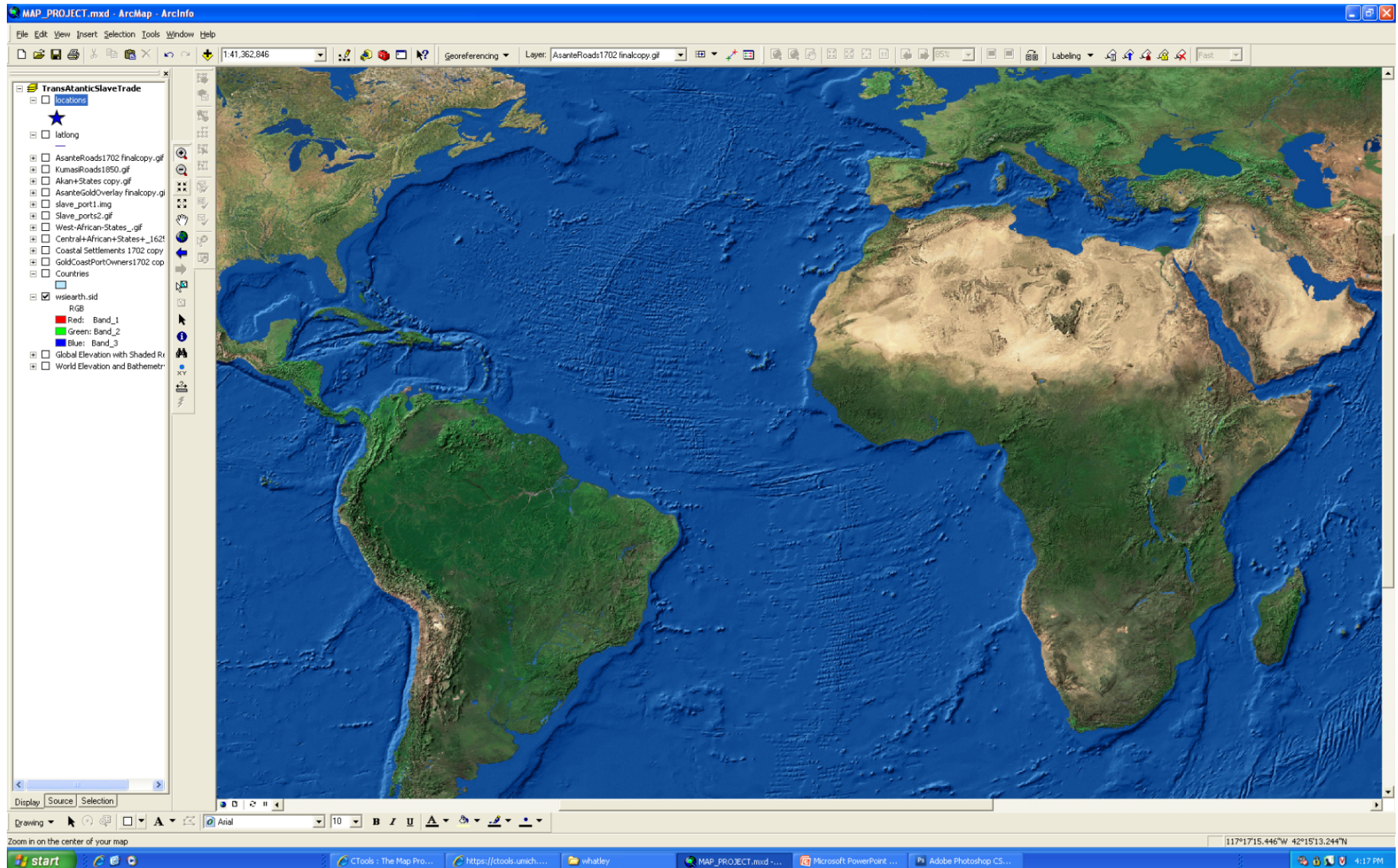
- GIS
- 34,000 voyages of the TSTD
- Historical maps, local histories/data and timelines

# Project Goals

- Help students visualize the cross-sectional linkages and historical timelines of the Atlantic slave trade
- Help students move from the global to the local and back again
- A repository for data and projects for future classes
- A visual representation of the Transatlantic Slave Trade Database
- Simulate the effect of the transatlantic slave trade on African economic development

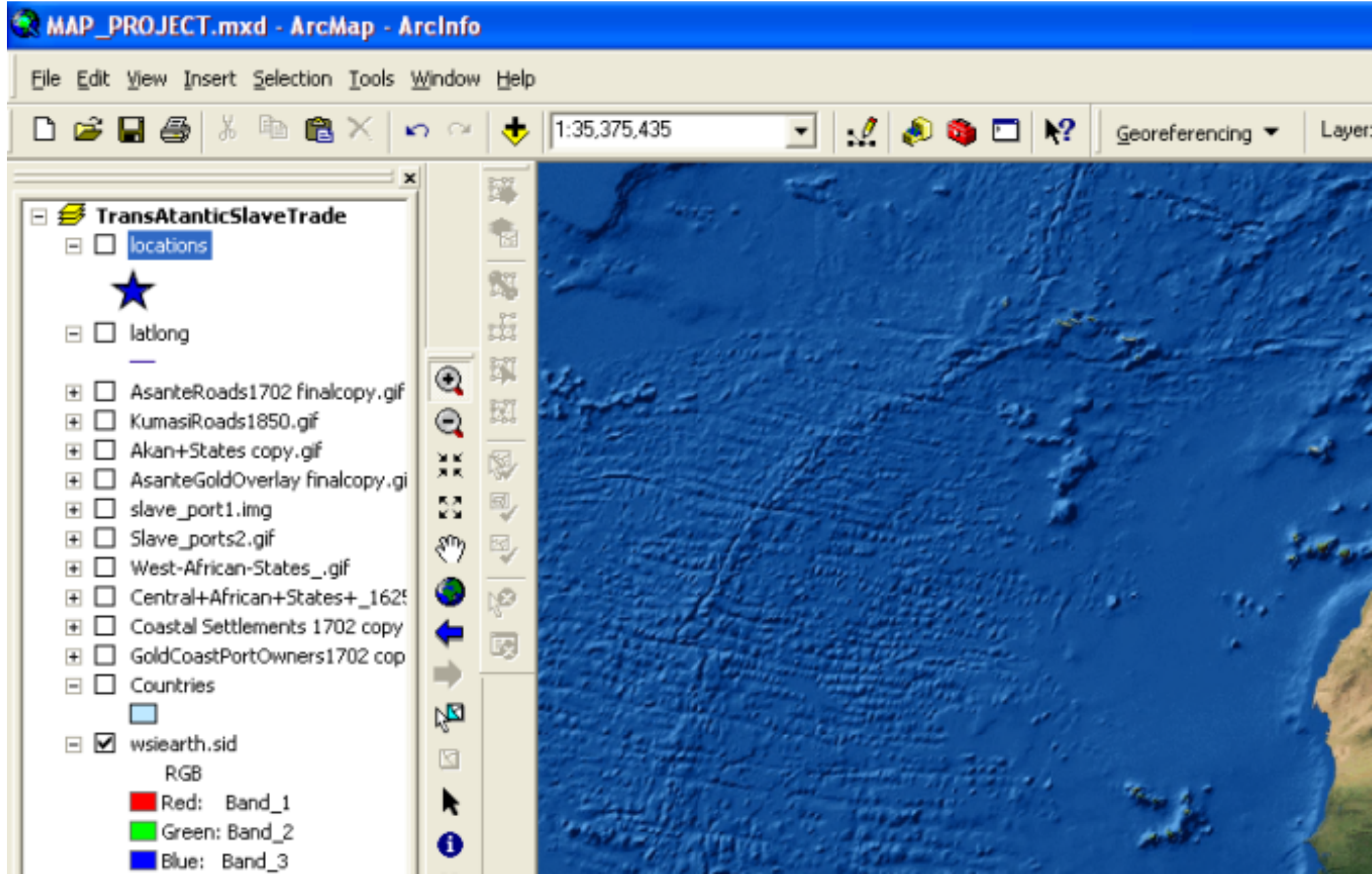


# The Atlantic World



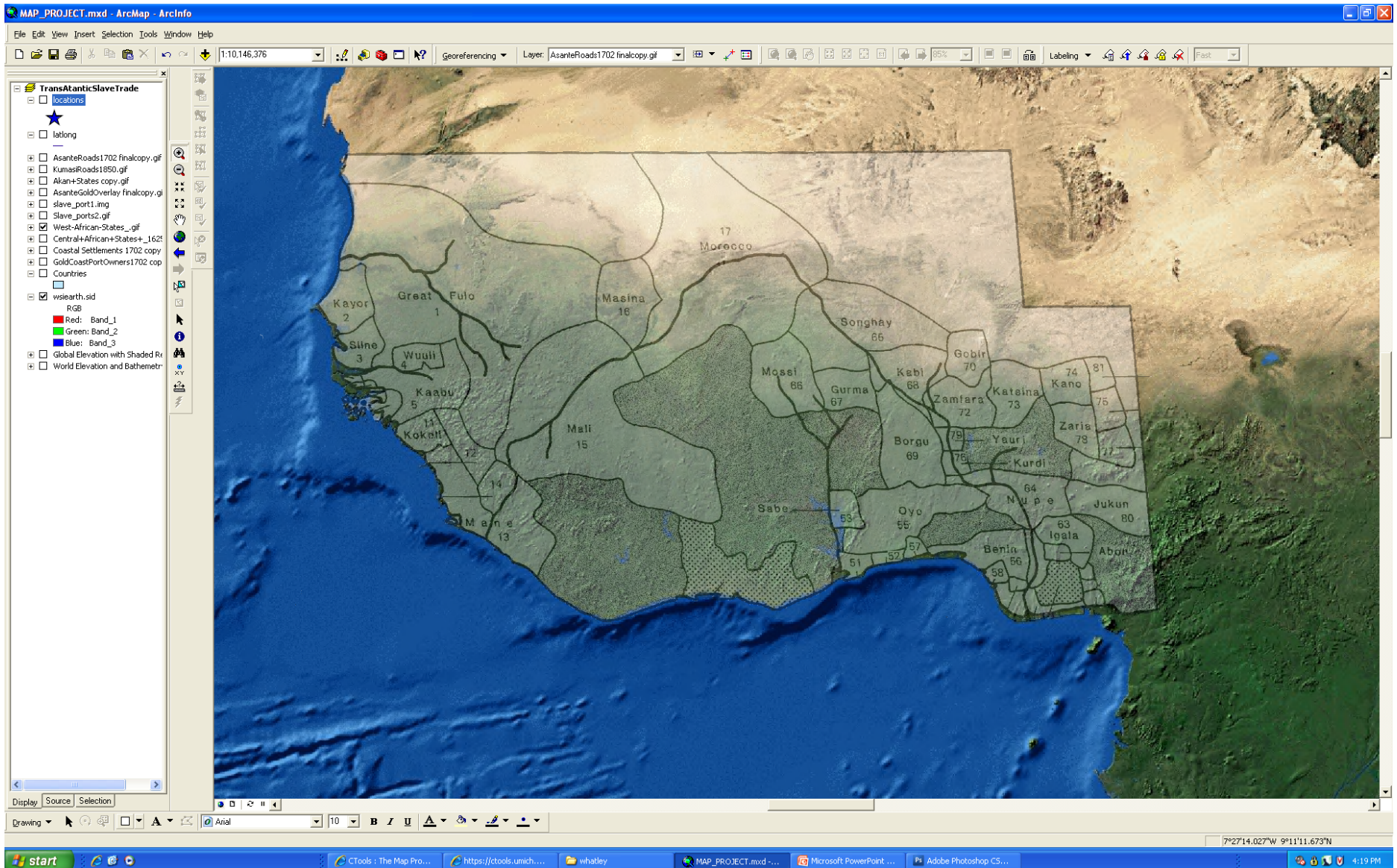


# Layers



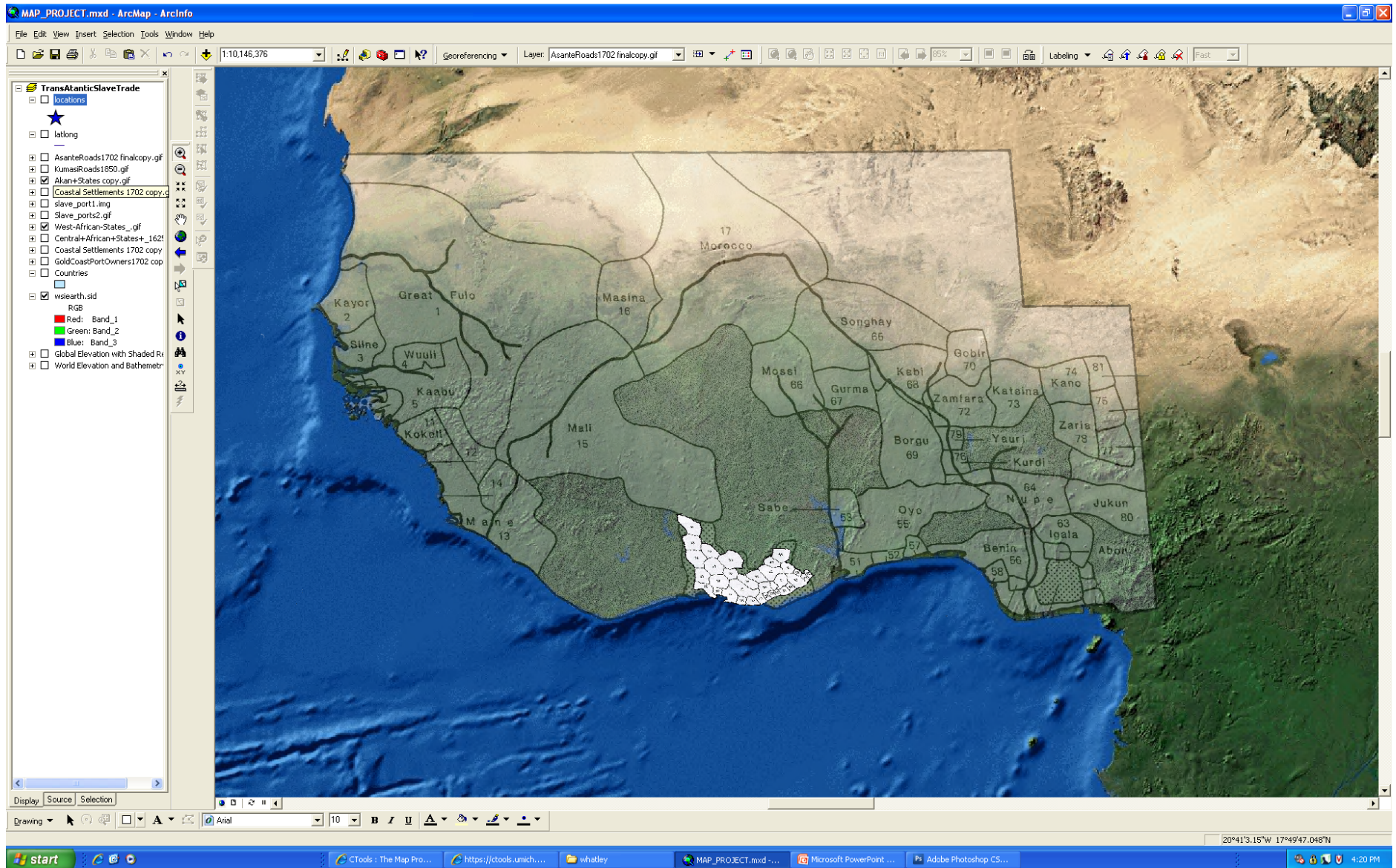


# The Western Sudan, 1625



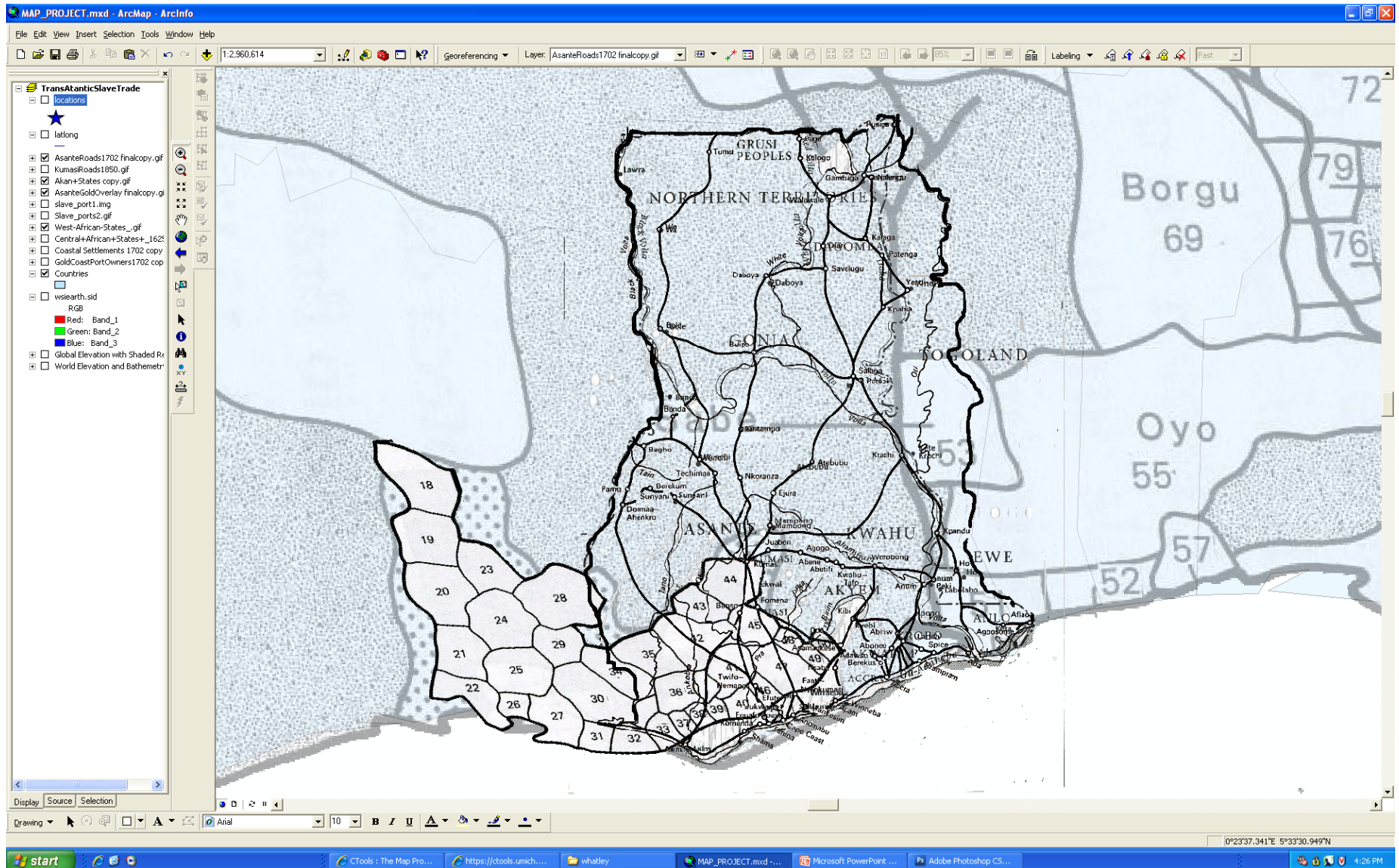


# The Akan Chieftancies, 1625

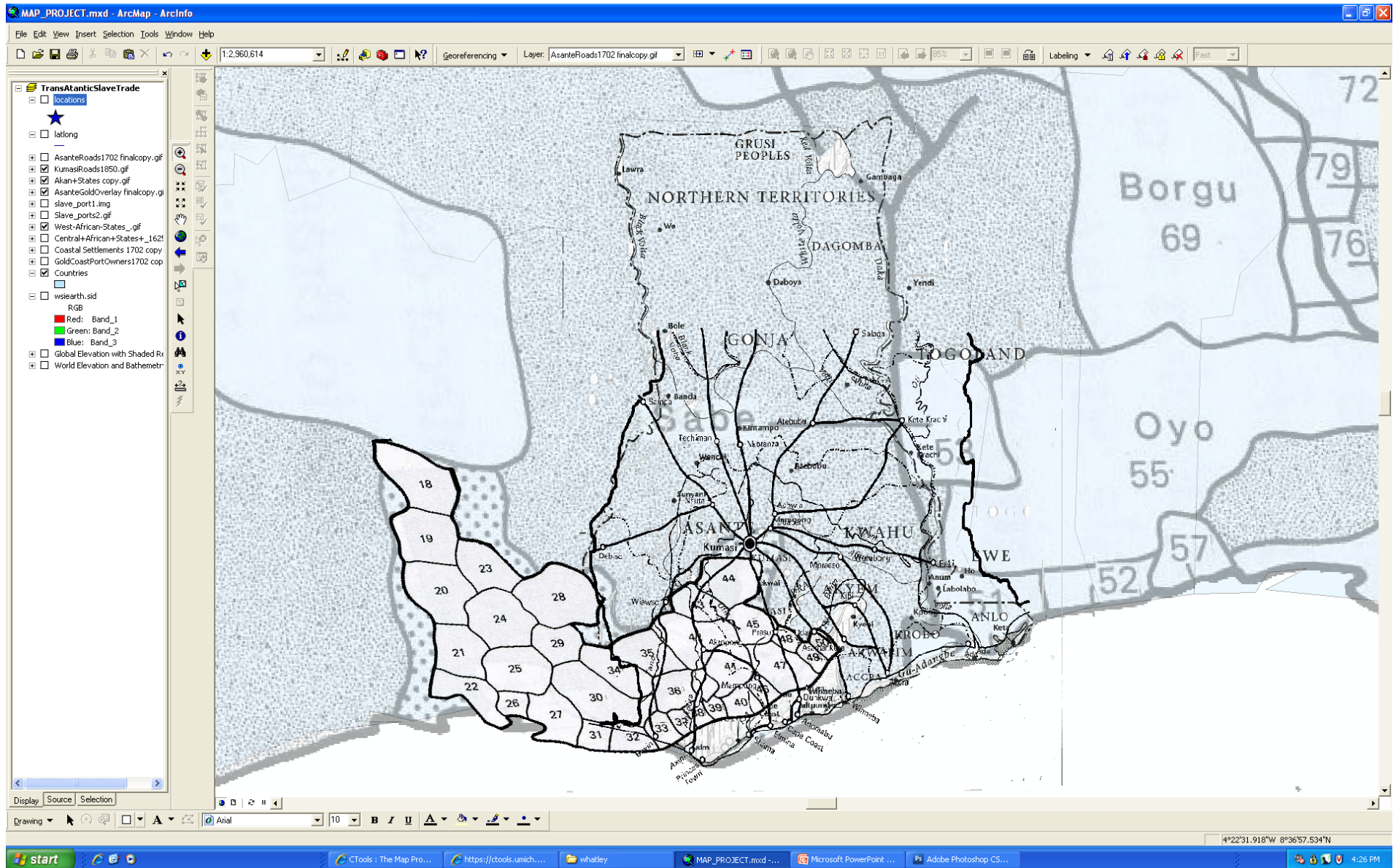




# The Roads to Kumase, 1702

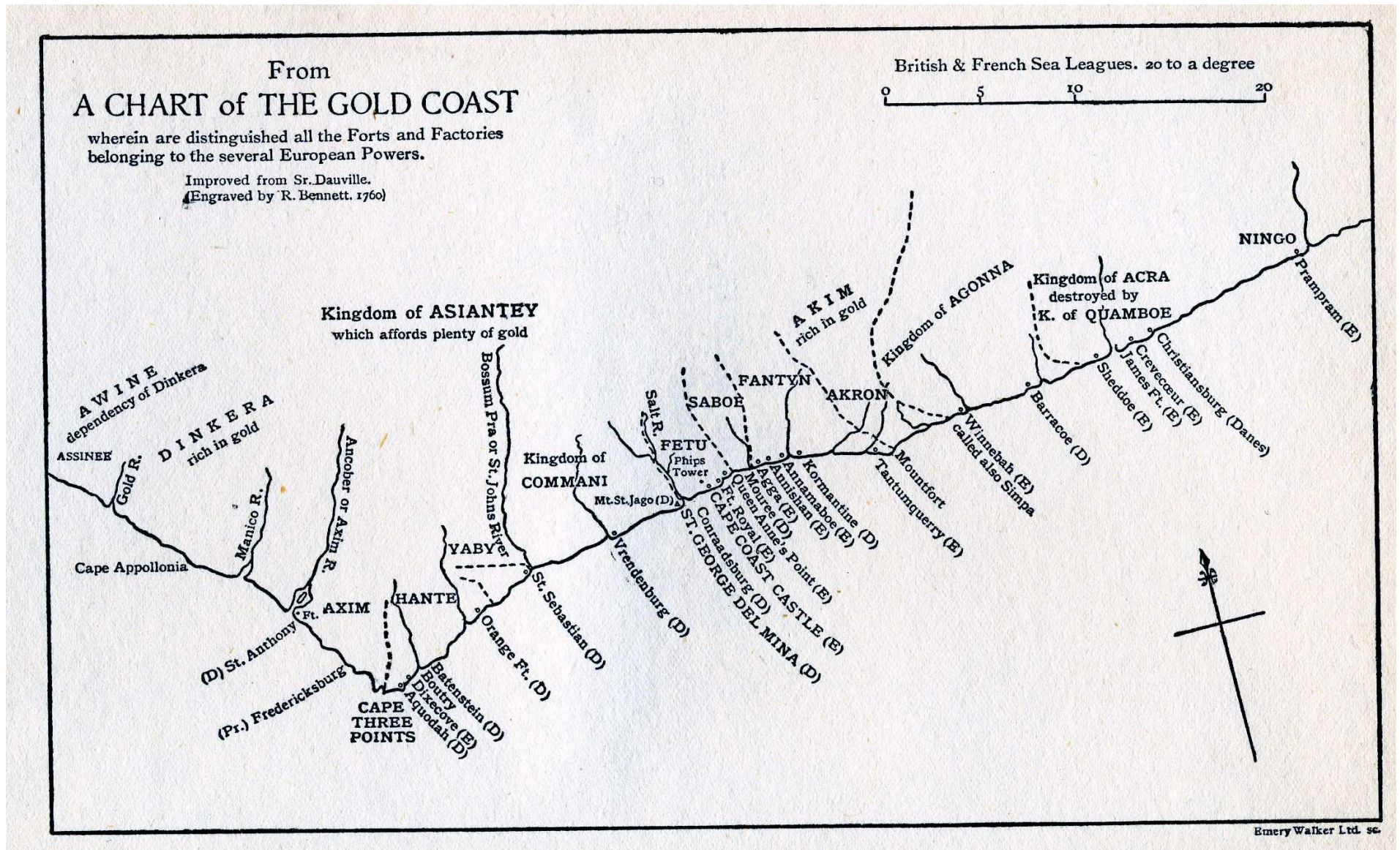


# The Roads to Kumase, 1850



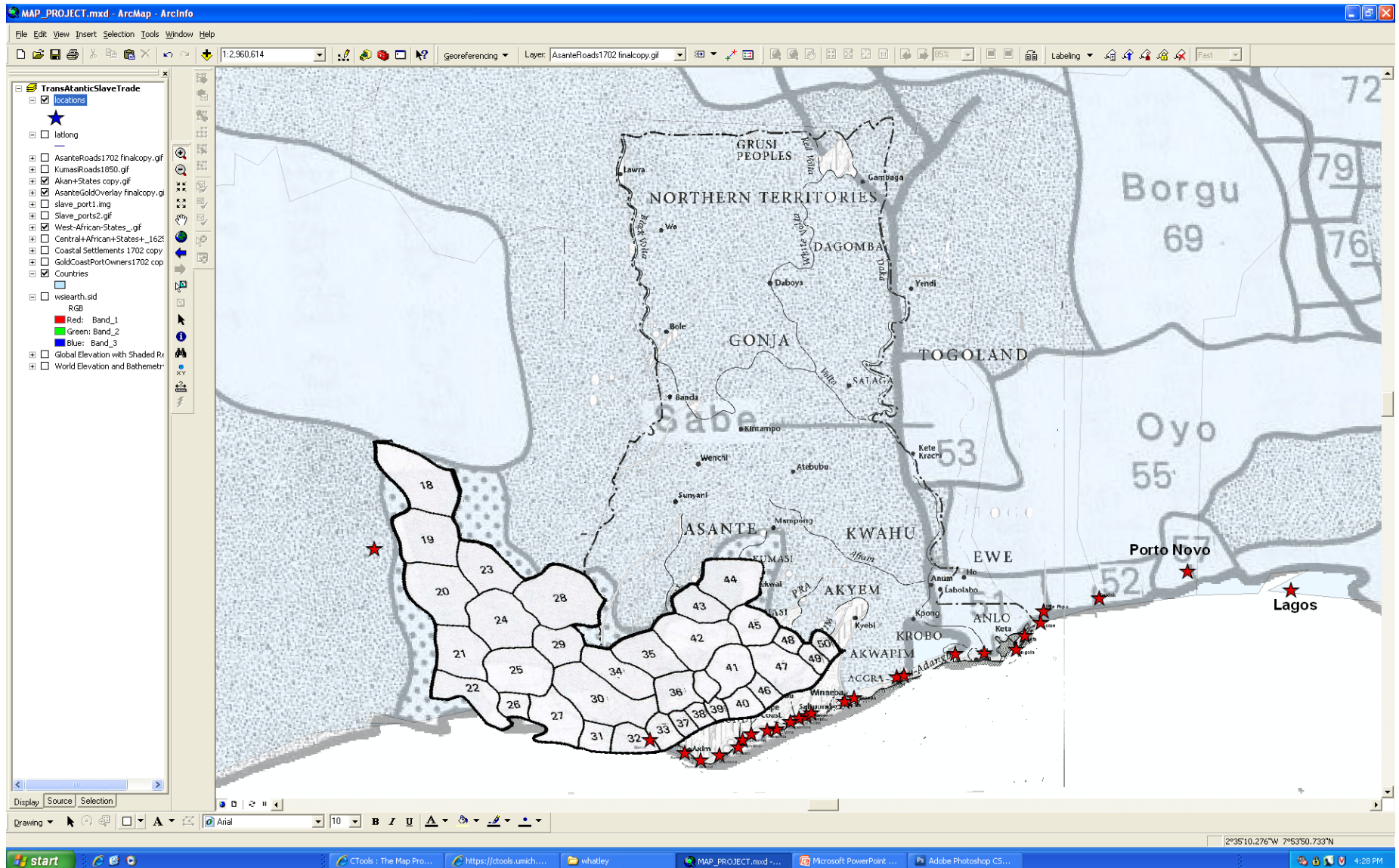


# Ports: Linking TSTD and GIS



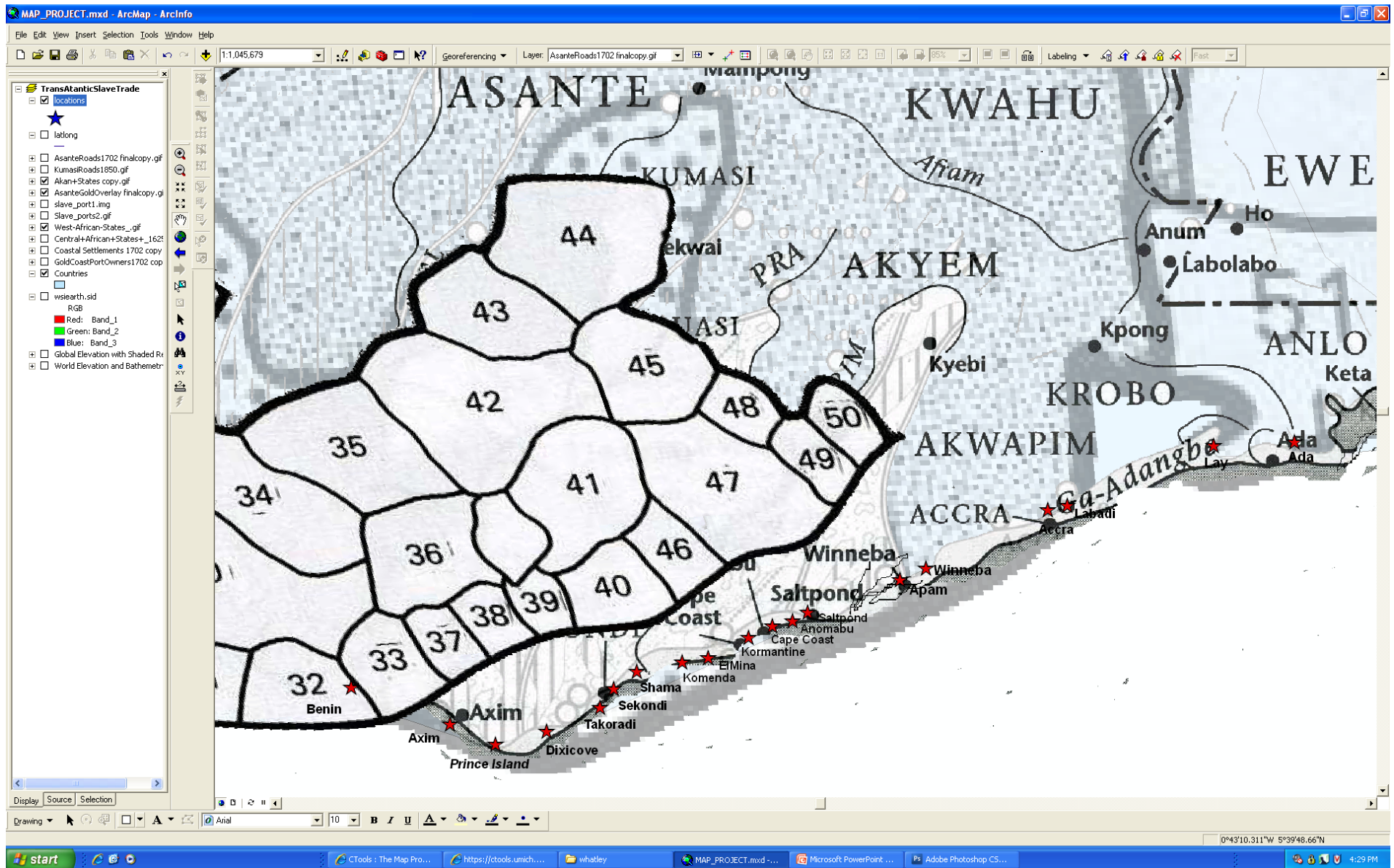


# Gold Coast Ports, Forts and Castles





# Gold Coast Ports, Forts and Castles



# The Cape Coast Castle "Attribute File"

The screenshot shows the ArcMap interface with a map of the Cape Coast region in Ghana. The map displays various locations including Wassaw, Fanti, Anomabu, Cape Coast, Sekondi, and Axim. A red star marks the Cape Coast location. An 'Identify' window is open, showing the attribute file for the selected location.

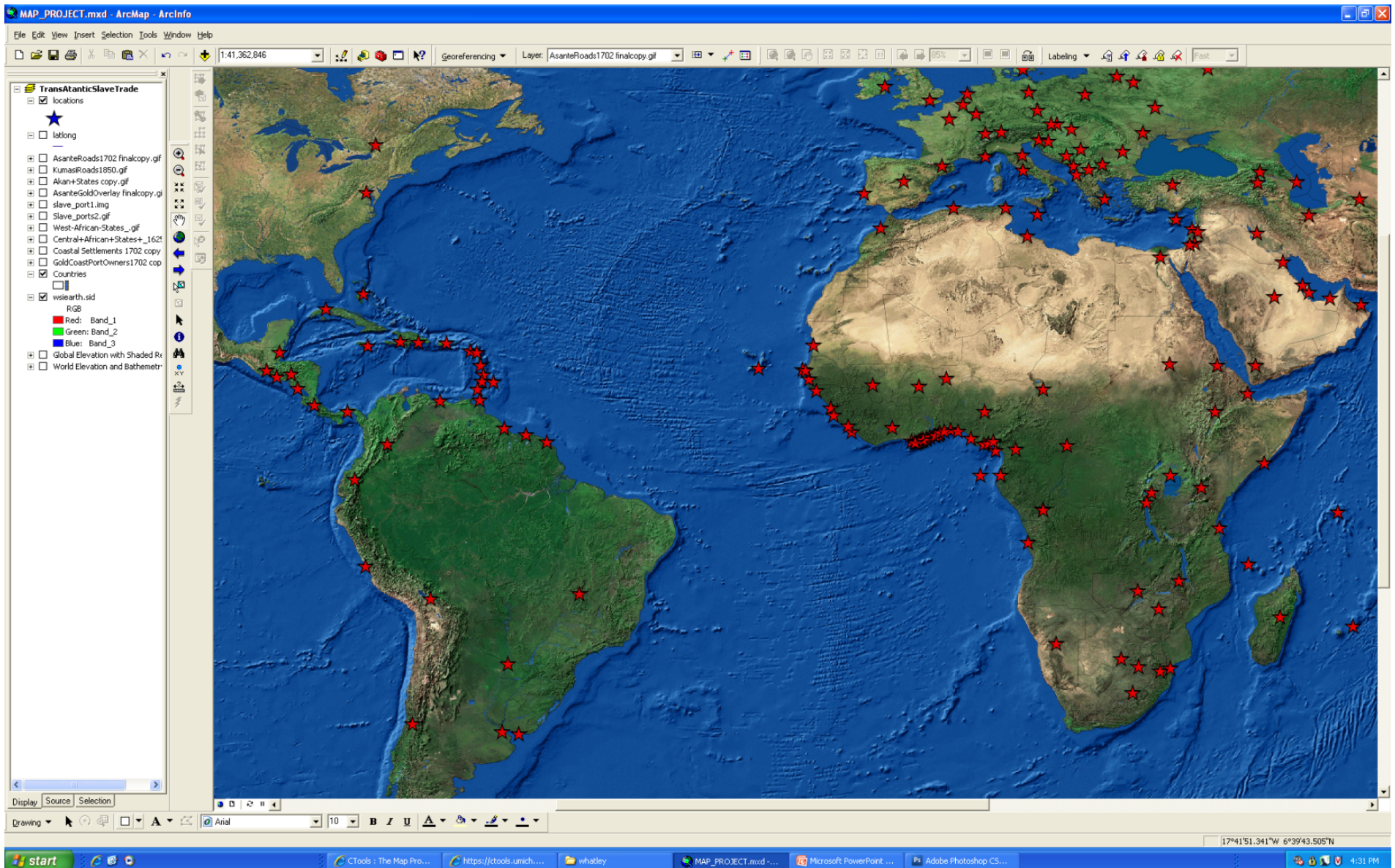
Field	Value
FID	199
Shape	Point
CITY_NAME	Cape Coast
GMI_ADMIN	
ADMIN_NAME	
FIPS_CNTRY	
CNTRY_NAME	
STATUS	Slave_Port
POP_RANK	0
POP_CLASS	
PORT_ID	0
TSTD_ID	72

# Cape Coast Castle (Ghana)





# Ports of the Atlantic World



# Possible Classroom Uses

- Treasure Hunt
- Map Quizzes
- Beyond The Numbers Game: Disaggregation of TSTD
- Restoring Links Across the Atlantic: The extent and effects of ethnic clustering in the new world.
- A place to deposit assignments and artifacts collected during student projects

# Project Status

- Substantial startup costs, but productivity has improved lately
- Currently populating The Map with more locations, historical maps and GIS data
- Must develop the data clearinghouse system
- Must learn how to represent visually the 34,000 voyages in TSTD

# Evaluation Plan?

- **HELP!!!**