

INVENIRE

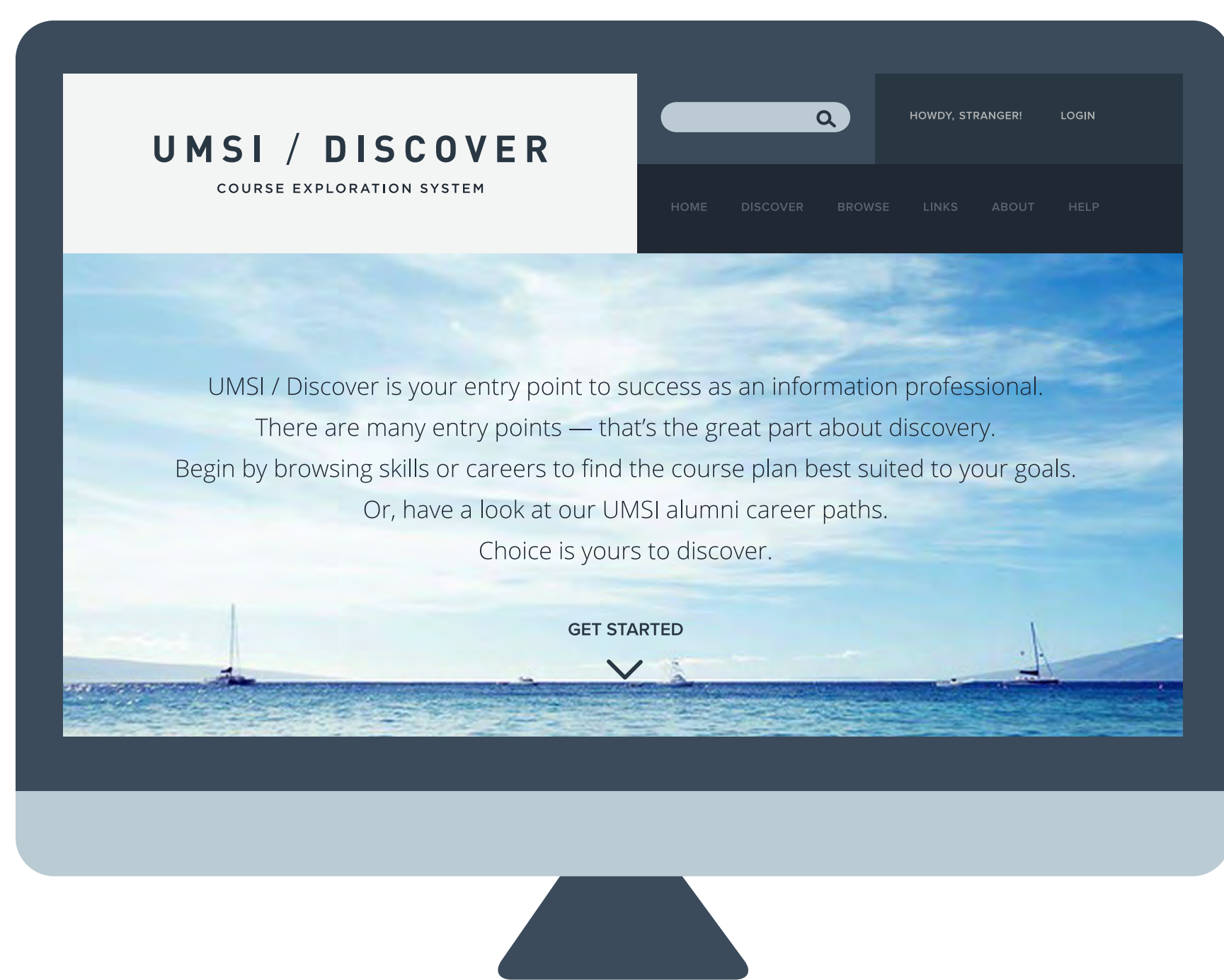
COURSE EXPLORATION GUIDE

PROBLEM STATEMENT

Course descriptions found in typical university course catalogs do not sufficiently show how courses translate into tangible career paths.

SOLUTION

Our web application, Invenire, provides students with a one-stop solution where students can explore new career possibilities, find the skills needed to succeed, and connect with the human networks that help one navigate these new terrains. Course catalogs help students plan for meeting their degree requirements; Invenire, the Latin verb for 'to find or to discover', helps students discover the connections between courses, skills, and careers.



GUIDING PRINCIPLES

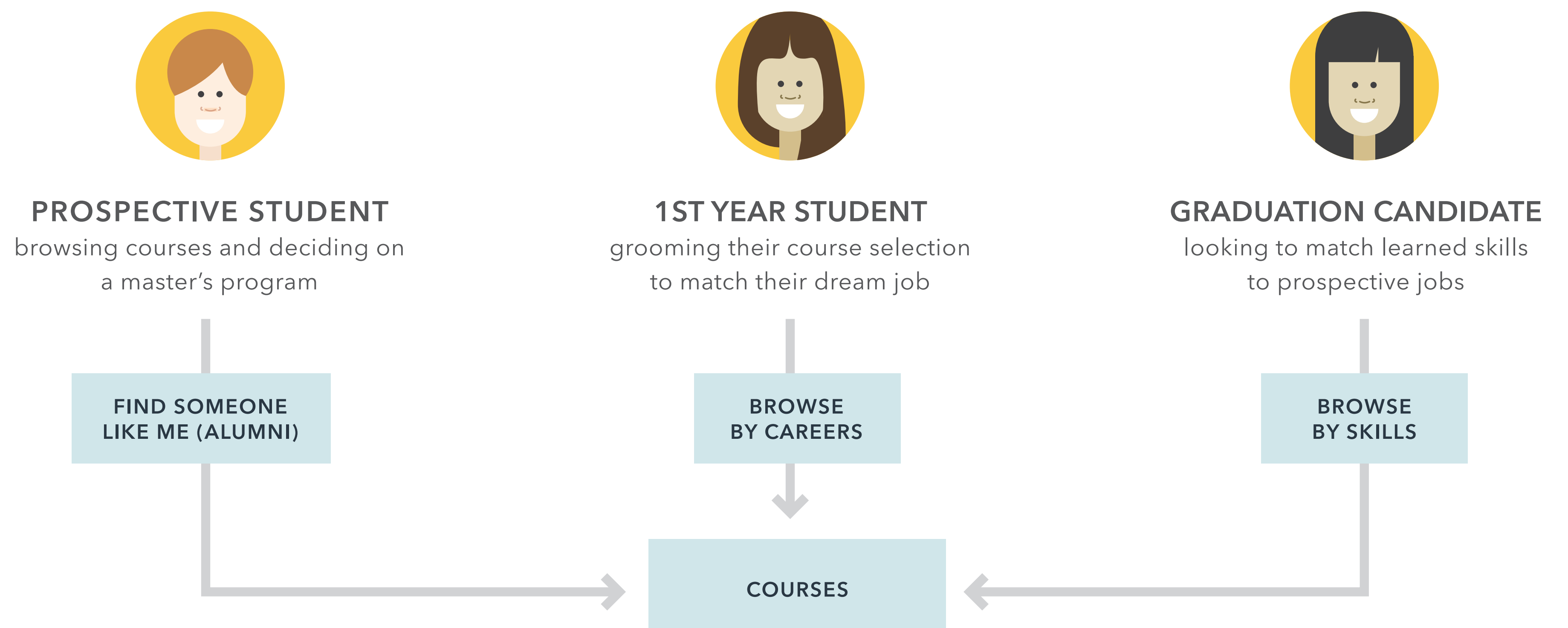
SELF-EXPLORATION & NAVIGATION
Students actively create their own path

MENTORSHIP
Alumni share their journey

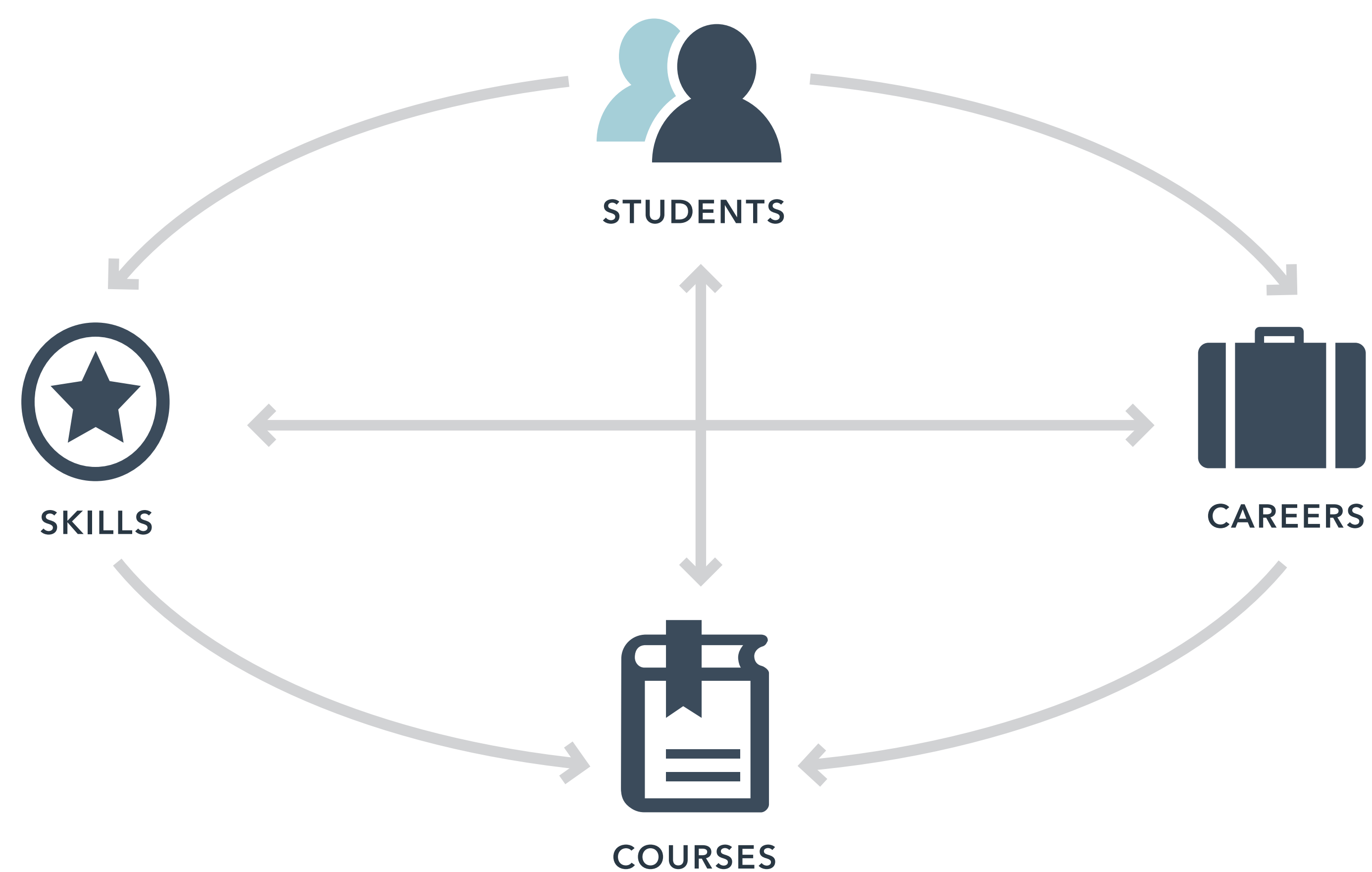
DESIGN
Site architecture guides user through the experience of discovery

ANALYTICS
Computation draws up relationships to support informed decision making

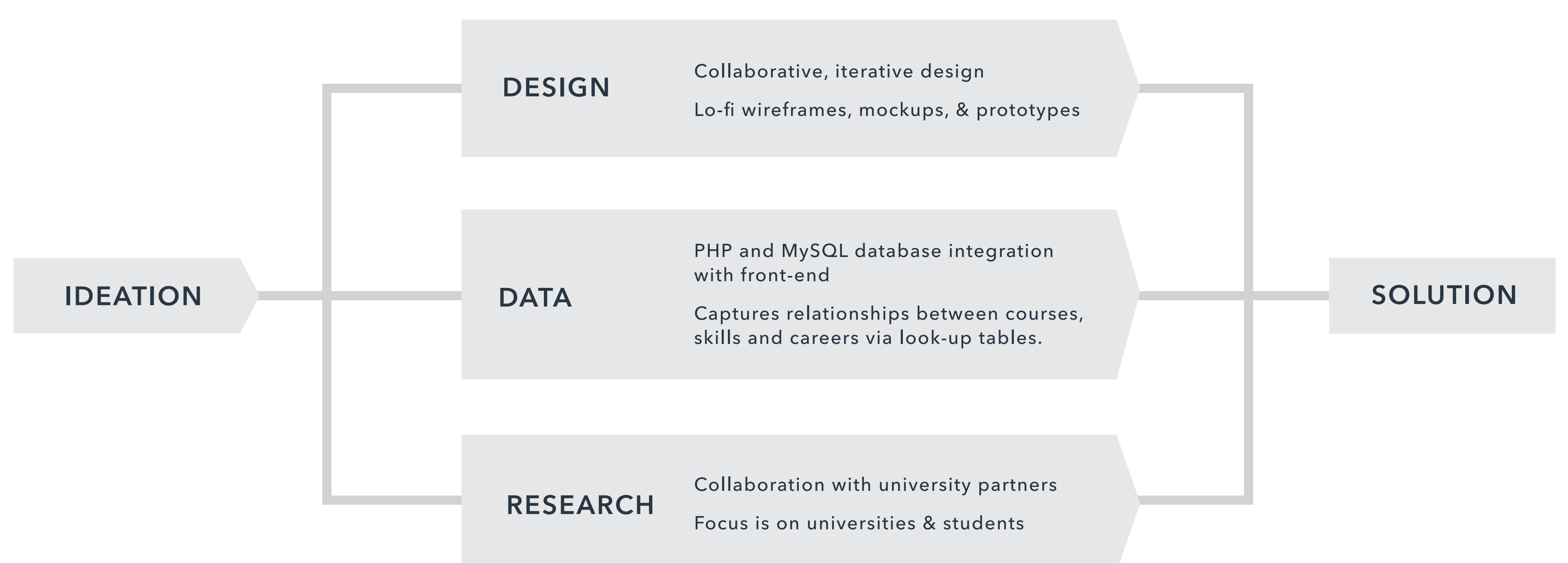
PERSONAS & USER PATHS



INFORMATION ARCHITECTURE



PARALLEL DEVELOPMENT PROCESS



PROJECT LEADS
Edgar Nuñez, Ying Ying Liu
BUSINESS TEAM
Lily Samimi, Mandy Wortz

CONTRIBUTING TEAM
Kimberly Springer, Maura Youngman,
Ray Alexander, Emily Reynolds,
Jessica Schaengold

The Invenire Team would like to thank the University of Michigan School of Information & the UM Center for Research on Learning and Teaching for their support.